

ETIQUETTE



0845 222 0354



sales@etiquette.co.uk



www.etiquette.co.uk

TTP-2410M SERIES



Designed for your most demanding barcode and identification applications, the new TTP-2410M Industrial Label Printer from Etiquette offers outstanding performance. Able to print at up to 12 inches per second, the TTP-2410M is the fastest label printer in the Etiquette range and when combined with free LabelDirect Professional Labelling Software it gives a faster label throughput than more expensive printers. If you are looking to increase productivity without increasing your budget, the Etiquette TTP-2410M is the ideal solution and supports a ribbon length of up to 600 meters and a full 8.2" Outside Diameter media roll. All this at an affordable price and with a 12 month warranty.



FREE
Full Professional
Labelling Software
with every
ETIQUETTE Printer

UNRIVALLED CONNECTIVITY

Housed in the die-cast Aluminium enclosure of the TTP-2410M are a multitude of enhanced connectivity options to benefit your print workflow. Internal Ethernet Print Server is a standard feature on the TTP-2410M – a feature only available as an expensive extra on rival printers in the market – and this Etiquette printer is also equipped with RS-232C, Centronics, and USB 2.0 Interfaces to ensure easy integration into any existing printing system.

INCREASED MEMORY

The powerful TTP-2410M Industrial Label Printer is loaded with 32MB DRAM and 8MB FLASH Memory and carries a slot for an SD Card to enable users to add an additional 4GB of FLASH storage for fonts, programs, and formats etc.

ADVANCED PROGRAMMING

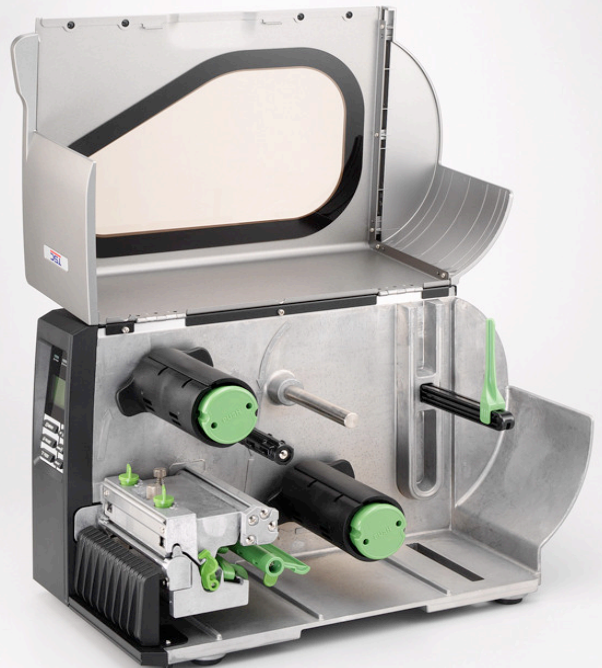
With the Etiquette TTP-2410M there are no complicated driver installations to carry out as the printer ships with the drivers already installed in its firmware. Combining this with the ability to autoswitch between TSPL, ZPL, and EPL programming languages for emulation of Zebra® and Eltron®, the TTP-2410M is one of the only true 'plug and play' printers on the market.

FULL PROFESSIONAL LABELLING SOFTWARE

The Etiquette TTP-2410M Printer is supplied complete with LabelDirect® Full Professional Labelling Software. In addition to providing the advanced features of other software programs in the market, LabelDirect® offers options such as printer job management and Datastore, and as it has been designed and developed specifically for the Etiquette Printer range it drives the TTP-2410M 'directly' in native command language. LabelDirect® is 100% WYSIWYG and produces unbeatable print performance.

FEATURES

- 203dpi Print Resolution
- Up to 12 inches per second print speeds
- Max Print Length – 160"
- 32-Bit RISC Processor
- Die-Cast Aluminium Enclosure
- Memory – 8MB FLASH, 32MB SDRAM, SD Card Slot for memory expansion
- Interfaces – RS-232C, Centronics, USB 2.0, and Internal Ethernet Print Server as Standard
- LCD Display – Graphic Type, 128 x 64 pixel, backlit
- Sensors – Adjustable Transmissive,/Reflective Sensor, Ribbon End Sensor, Head Open Sensor
- Accessories – LabelDirect® Software, Quick Start Guide, USB Cable, Power Cord



PRINTER	<ul style="list-style-type: none"> TTP-2410M
RESOLUTION	<ul style="list-style-type: none"> 203 DPI
PRINTING METHOD	<ul style="list-style-type: none"> THERMAL TRANSFER & DIRECT THERMAL
PRINT SPEED	<ul style="list-style-type: none"> Up to 12 IPS
MAX. PRINT WIDTH	<ul style="list-style-type: none"> 104mm (4.09")
MAX. PRINT LENGTH	<ul style="list-style-type: none"> 4064mm (160")
ENCLOSURE	<ul style="list-style-type: none"> Die-Cast Aluminium Base and Frame
PHYSICAL DIMENSION	<ul style="list-style-type: none"> 270mm (W) x 308mm (H) x 505mm (D)
LABEL ROLL CAPACITY	<ul style="list-style-type: none"> 208.3mm (8.2") OD
PROCESSOR	<ul style="list-style-type: none"> 32-Bit RISC CPU
MEMORY	<ul style="list-style-type: none"> 8MB Flash Memory 32MB SDRAM SD Card Slot for Memory Expansion
INTERFACE	<ul style="list-style-type: none"> RS-232C Centronics USB 2.0 Internal Ethernet Print Server
POWER	<ul style="list-style-type: none"> Internal Switching Power Supply
OPERATION SWITCH, BUTTON, LED	<ul style="list-style-type: none"> One Power Switch 6 Operation Buttons
SENSORS	<ul style="list-style-type: none"> Position Adjustable transmissive/reflective sensor Ribbon End Sensor Head Open Sensor
INTERNAL FONT	<ul style="list-style-type: none"> Eight Alpha-Numeric Bitmap Fonts Monotype Imaging® TrueType font engine with one CG Triumvirate Bold Condensed Scalable Font
BARCODE	<ul style="list-style-type: none"> 1D Barcode – Code 39, Code 93, 128UCC, Code 128 Subset A, B, C, Codabar, Interleave 2 of 5, EAN-8, EAN-13, EAN-128, UPC-A, UPC-E, EAN and UPC 2 (5) digits add-on, MSI, PLESSEY, POSTNET 2D Bar Code – PDF-417, Maxicode, Datamatrix, QR Code
FONT & BARCODE ROTATION	<ul style="list-style-type: none"> 0, 90, 180, 270 Degrees
PRINTER LANGUAGE	<ul style="list-style-type: none"> TSPL-EZ
MEDIA TYPE	<ul style="list-style-type: none"> Continuous, die-cut, tag, fan-fold, notched, black mark, Perforated, Care Label
MEDIA WIDTH	<ul style="list-style-type: none"> 25.4m – 118mm (1.0" – 4.6")
MEDIA THICKNESS	<ul style="list-style-type: none"> 0.06 – 0.30mm (2.3-11.8mil)
MEDIA CORE DIAMETER	<ul style="list-style-type: none"> 25.4mm (1") & 76.2mm (1" - 3")
ENVIRONMENT CONDITION	<ul style="list-style-type: none"> Operation : 5-40°c, 25-85% Non Condensing Storage : -40°c – 60°c, 5-90% Non Condensing
SAFETY REGULATION	<ul style="list-style-type: none"> FCC Class A, CE Class A, C-Tick Class A, UL, CUL, TUV/GS, CCC
ACCESSORIES	<ul style="list-style-type: none"> LabelDirect® Labelling Software Quick Start Guide USB Cable Power Cord
REAL TIME CLOCK	<ul style="list-style-type: none"> Standard
OPTIONS	<ul style="list-style-type: none"> Etiquette Solo Standalone Keyboard System RFID Ready Printer Applicator I/O Interface External Wireless (802.11bg) Print Server Peel-Off Kit (including Internal Rewind & Peel Off Module) Internal Rewinding Kit (Including Label redirect front panel) Regular Cutter Heavy Duty Cutter